



PRODUCT CATALOG



The Artco-Bell Story...

Artco-Bell Corporation is a member of the Sagus International family of companies (www.sagusi.com). Since 1962, Artco-Bell has provided America with the very best in classroom furniture. Our comprehensive offering of proven, high-quality and innovative products are second to none. Knowledgeable, skilled customer service combined with manufacturing excellence and a superior dealer network allows Artco-Bell to stand apart from the competition in a competitive and rapidly expanding school furniture marketplace.

The right blend of classroom furniture will positively enhance a child's ability to learn. Artco-Bell understands the importance of creating a distraction-free learning environment in the classroom. This understanding is precisely why our entire team is devoted to incorporating student-friendly product designs into our line.

Quality Assurance

Artco-Bell's number one goal is quality. The production of safe, reliable and long lasting products is not simply a phrase...but a way of life at Artco-Bell.



Our in-house quality assurance testing facility ensures the accuracy and consistency of our raw materials and the stability of



our finished goods. Scheduled and random testing during our manufacturing process enables Artco-Bell to consistently deliver the very best in classroom furniture. Extensive hours of testing are completed before we even begin our manufacturing process. The concept of testing in simulated, real life



situations...from repetitive impact and load testing... to the sliding of our chairs and combos for wear assessment...simulates the rigorous environment of today's classroom. Stringent quality standards

combined with testing and quality checks during manufacturing and assembly guarantee that you will have the very best in classroom furniture...and peace of mind. Our dedication and commitment to quality is goal one.

A+ Product Series

One size does not fit all. In today's classroom, children come in many shapes and sizes. The industry standard, "A" size offering does not properly accommodate today's larger students. Our A+ option features over 30% more



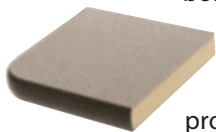
surface area in the shell and a taller height.

Originally developed for the Uniflex Series, the A+ option has expanded to include our Solid Plastic Series and our Prodigy™ Series. Every child deserves furniture that accommodates their wide-range of sizes. Experience the difference A+ can make in your classroom.



Perma Tuff™ Edge

Sure to set a new standard for the classroom, this durable edge option offers both style and durability. Perma Tuff™ is a polyurethane epoxy resin, chemically bonded to the edges of the plastic laminate, core material and backing sheet. For years this process has protected the automotive industry and is now available for use in the classroom.



The option is available on student work surfaces, activity tables and computer furniture. Impact resistance, ease of cleaning and a permanent application ensures years of worry-free use.

GreenGuard®

Our commitment to protecting the environment is part of our daily work ethic. Every piece of furniture we produce has received the GreenGuard Certification for Children and Schools. We know that our children are the future and we take great care in protecting them, the environment and the planet.



CONTENTS:

Prodigy Series	4-9
Uniflex Series	10-15
Solid Plastic Series	16-19
Student Desks	20-23
Computer Furniture	24-27
Teacher's Desks	28-29
Multi-Purpose Tables	30-31
Additional Seating, Stools & Accessories	32-34

15 Year Warranty

See our *Classroom Solutions* brochure to view our exciting Discover™ and Archetype™ product lines.



Prodigy™

Our Prodigy™ Series of chairs, desks and combos provide sound ergonomics combined with fluid form and the strength to hold up in any environment. Sleek modern lines and graceful curves compliment today's 21st Century classroom. A full range of sizes, including the A+ offering will accommodate all shapes and sizes. Our introduction of the Prodigy™ Z-Series of chairs and desks promises you the most comprehensive offering in today's modern and demanding market. Prodigy™...the smart choice.





Experience the beauty of Prodigy's™ graceful lines. The gentle curves, stylish ribbing and ergonomic support welcome children of all shapes and sizes. Give your classroom style and excitement. Prodigy™...the smart choice.



PS95, PS97, PS98 (A+) – Grace and mobility in three size options. PS97 and PS98 are offered with optional pads for added comfort. Optional nylon glides available.

PL95, PL97, PL98 (A+) – Lab stool offering. PL97 and PL98 are offered with optional pads. Optional glides available.

Gentle organic lines with a soft sculptured handle conveniently placed along the top of the chair for ease of movement.

Generous arc along the chair back, coupled with soft, sloped edges for freedom of lateral movement.



Proper lumbar support carefully positioned to fit a wide range of sizes. Contoured seat and waterfall edge reduces pressure and enhances circulation.

Prodigy's™ smart shell design with 17 support ribs provides support where it's needed...along the mid-back area with back flex to enhance comfort.

A+

Model	Size
P108	18 1/2"
P107	17 1/2"
P105	15 1/2"
P103	13 1/2"
P101	11 1/2"



Prodigy™ chairs in five sizes... 11 1/2", 13 1/2", 15 1/2", 17 1/2" and our 18 1/2" A+ option...make Prodigy™ the most comprehensive and attractive line in today's demanding market. 21st Century classrooms demand 21st Century furniture. Give your school excitement...and watch your children learn. Prodigy™...the smart choice.

Prodigy's™ Z-Leg Series Chairs



Elegant in its design with all of the benefits of the ergonomically superior Prodigy™ shell, the Z-Leg Series offers the perfect blend of form and function. The rugged 12 gauge, 1" tubular steel frame and legs are further enhanced with Artco-Bell's exclusive "tube-in-tube" construction. Inside each 12 gauge tubular leg is an 18 gauge, 3/4" steel tube that runs from the critical leg bend all the way up to the seat pan bend. This engineering design makes the Prodigy™ Z-Leg Series the strongest and most durable frame in the industry.

Stackability, previously unseen with this design style combined with Prodigy's™ work surface nesting capability make this series a uniquely superior offering for any classroom application. Glide options include nylon, steel and felt for every floor application.

Prodigy's™ ergonomically superior shell design offers flexibility, durability and critical lumbar support creating a classroom chair that promotes and enhances the education process. A broad designer color pallet combined with four sizes, including A+ for larger students and adults, produces the perfect Z-Leg classroom option.



“one size does not fit all”

A+

S
E
R
I
E
S

P
R
O
D
I
G
Y

T
M

Model	Size
P308	18 1/2"
P307	17 1/2"
P305	15 1/2"
P303	13 1/2"



Industry Standard
“A” Size

Prodigy's™ Z-Leg Series Student Desks

Created to compliment the Z-Leg chairs, this desk series offers a multitude of work surface shapes to compliment collaborative learning. Traditional rectangle, soft rectangle and teaming shaped work surfaces come standard with our PermaTuff™ edge.

Beefy and stable, the 12 gauge, 1 1/2" tubular steel frames are offered in four fixed heights: 31", 29", 27" and 25" to accommodate today's broad range of students. Glide options include nylon, steel and felt to compliment the Z-Leg seating.

Offered with Prodigy's uniquely designed poly book box in all of the chair shell colors, this desk series also has a wire book rack option or can serve as a study desk without a book box or rack. The unit also has an optional book bag hanger offering.

Designed for learning, the Prodigy™ Z-Leg Desk Series delivers design excitement, durability and rock-solid stability for the 21st Century classroom.



prodigy™ series

Prodigy's™ top options include our teaming work surface. Group as many...or as few as you choose. Prodigy™ gives you limitless possibilities in the classroom. Choose teaming, soft-rectangle or standard rectangle work surfaces. Prodigy™ configures and reconfigures...pull up a desk and experience Prodigy™.



Prodigy's™ unlimited combinations



Prodigy™ offers three work surface options. Teaming, soft-rectangle or standard rectangle...all based on a 20" x 26" format. Choose the work surface that works for you. Every Prodigy™ student desk is offered in an open-front or study-desk option.



Teaching methods are changing constantly. You need a student desk that keeps pace with these changes.

With our teaming shaped surface option, one desk fits any team size.

Our soft-rectangle shaped surface option gives new life to the industry standard rectangle work surface.

Pick a surface, any surface...

Prodigy™...the smart choice.



smart choice

A+

The Prodigy™ four leg combo brings style and excitement to any classroom. Choose our A+ option...Prodigy™ A+ ensures the right seating for all students.



The Prodigy™ sled based combo gives easy access to both right and left-handed students. Choose our A+ option for today's larger students.



Combos with the grace and beauty of modern sculpture. Strength and durability demanded in today's classroom. Size options to fit every need. Prodigy™...the smart choice.

Prodigy™ Colors

Prodigy™ Shell and Bookbox Colors



Solid Plastic Desktop Selections



Laminate Selections



Color representation may not be exact. Please contact Artco-Bell customer service for color swatches.

VERSATILITY, ERGONOMICS & VALUE

FOR ALL AGES

Uniflex Series



Our classic Uniflex Series provides a comfortable and value-conscious choice that will accommodate any classroom. Years of quality design and millions of units in the field have proven the strength and durability of the Uniflex Series. The proven ergonomic design of the Uniflex shell places today's students in the proper task position for learning. With a comprehensive offering of chairs and combos, including our A+ offering, Uniflex has been the line of choice for over forty years.



The shell is reinforced with structural ribs formed in the mold eliminating the need for a rigid and inflexible pipe support in the back.

The one-piece shell is supported with a 16 gauge die formed saddle brace welded to the back leg assembly and riveted to the lower flange of the shell to supplement back support.

The lumbar relief vent eliminates pressure and provides comfort in the vital lower back area. Additional structural support in the lumbar area is provided by the flanged opening.

The deep waterfall front edge promotes comfort and good circulation in the legs.



7107 – Our industry standard “A” size 17 1/2” chair ... the standard choice for millions of children in America’s classrooms. Also offered, the 7108 A+ 18 1/2” chair for today’s larger students.

Industry Standard
“A” Size



“one size does not fit all”

When furniture does not properly accommodate students, distraction and discomfort comes easily. Artco-Bell has developed a series of chairs that are designed for a wide variety of student sizes. Ranging from 11 1/2 to 17 1/2 inches and including our A+ 18 1/2 chair, our Uniflex chair series accommodates all K-12 students plus today’s larger and taller students.

Model	Size
7108	18 1/2"
7107	17 1/2"
7105	15 1/2"
7103	13 1/2"
7101	11 1/2"

With millions of units supporting America's children, the Uniflex Series is our most comprehensive product line. Intelligent, ergonomically designed frames along with industry-leading innovation has established the Uniflex Series as the standard for today's classrooms. Four sizes of combination desks, five chair sizes and an array of supporting products give you the best option for today's value-conscious classroom.



7109, 710P (A+) – Our music pitch chairs are ideal for band halls, music rooms and concert performances. Our unique rear leg design combined with the Uniflex shell ensures the optimum position for playing an instrument. The rear leg design also allows for maximum aisle space, eliminating trip hazards.

7147, 7148 (A+) – An optional ganging device connects chairs together...ideally suited for auditorium-type seating arrangements. Available in 17 1/2" and 18 1/2" (A+) sizes.



Q-Ball – Is there a glide that will not scratch flooring? Yes! The optional Q-Ball™ glide will not scratch or mar today's classroom floors.

Padded Option – An optional padded seat and back adds comfort to Uniflex seating.



7990 – Height adjustability for multiple applications...a foot ring welded to the exterior of the legs for enhanced stability and all of the benefits of the Uniflex shell...functionality and strength for the lab or the classroom.

7P90, 7P98 (A+) – Whether used in the computer room or as a teacher's chair...our castered five-star, pneumatic height adjustment offering is sure to fit every application. Optional nylon glides and our A+ size offering provide choices that make sense for any application.

Also available in a lab stool configuration: 7L90 and 7L98 (A+).



Five-point base also available with optional glide package.



7155, 7157, 7158 (A+) – Our Uniflex chair with the convenience of an added bookrack. This model is offered in the 15 1/2", 17 1/2" and 18 1/2" (A+) sizes.

7167, 7168 (A+) – All the features and benefits of our Uniflex chair in a caster option. This chair can also provide an attractive, value-conscious choice for computer labs. Available in 17 1/2" and 18 1/2" (A+) heights.



0160 – Moving chairs efficiently and easily is not a problem for our chair dolly. Protect floors and reduce back strain with the ease of moving up to 10 chairs at one time.



7003, 7005, 7007, 7008 (A+) – The Uniflex stack chair features an ergonomic shell with the styling of a sled base frame offered in four sizes.

Industry Standard "A" Size



traditional



Model	Size
7008	18 1/2"
7007	17 1/2"
7005	15 1/2"
7003	13 1/2"



7457 – Our most popular combination desk and the standard for classrooms throughout America. Rock-solid construction ensures years of trouble-free use. Available in four sizes including our A+ offering.

Model	Size
7458	18 1/2"
7457	17 1/2"
7455	15 1/2"
7453	13 1/2"



7457, 7458 (A+) – Our standard "A" size and A+ combos. Options that include every child...for every classroom application.



L457 – All the features and benefits of our proven combo with a jumbo tablet arm.



7257, 7258 (A+) – Our chair desk model is a great option when floor space is limited. This unit is also available in the popular A+ size option which makes it ideal for college settings.



7857, 7858 (A+) – Our Uniflex combination desk features the convenience of a dual-entry design... easily accommodating both left and right-hand students. This unit is also available in our A+ size.

U n i f l e x S e r i e s C o l o r s

Shell Colors



Burgundy (B) Emerald Green (9G) Ruby Red (V) Graphite (G) Grey (K)

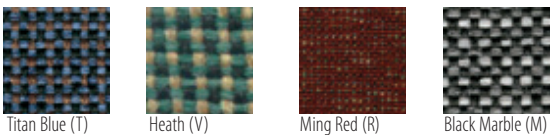


Navy (N) Onyx (D) Purple Iris (93) Royal Blue (9B) Evergreen (E)



Sand (3) Yellow (Y) Teal (A)

Fabric



Titan Blue (T) Heath (V) Ming Red (R) Black Marble (M)

Additional fabric colors on page 35.

Solid Plastic Desktop Selections



Grey (K) Beige (4) Sugar Maple (D) Wild Cherry (S)

NEW!

Metal Finishes

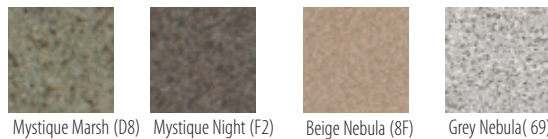


Chrome (5) Black (7) Putty (3) Chardark (2) Titanium (4)

Laminate Selections



Nepal Teak (72) Bannister Oak (8) Woodland Rose (16) Montana Walnut (1L)
Grey Glace (18) Fusion Maple (7M) Wild Cherry (4S) Windsor Mahogany (63)



Mystique Marsh (D8) Mystique Night (F2) Beige Nebula (8F) Grey Nebula (69)

NEW!



Flame Soapstone (S)

DESIGNED TO MEET THE NEEDS OF

TODAY'S DEMANDING CLASSROOM

Solid Plastic Series



Durability, traditional design, rock-solid construction and ease of cleaning are the cornerstones for this series of classroom furniture. Our Solid Plastic Series features heavy gauge steel frames and ergonomic design. The use of nylon bushings and stacking bumpers preserve the structural integrity and beauty of this series for years of quality service in the classroom.

Industry Standard
"A" Size

A+



Our X-Series is available in 11½", 13½", 15½", 17 ½" heights and our 18½" A+ size to accommodate today's wide range of students.

The X-Series is our top selling solid plastic stacking chair, available in five sizes. Our 18½" A+ chair has an oversized seat and back designed for today's larger and taller students.

Model	Size
X108	18 1/2"
X107	18"
X105	15 1/2"
X103	13 1/2"
X101	11 1/2"



Tamper-resistant fasteners feature nylon bushings for product longevity.



The smooth surface wipes clean with a sponge and resists fading, stains, and scratches.



A convenient handle allows ease in movement and will prevent impact between the back rest and the floor, in case of a fall.



True X-frame is designed for proper weight distribution. Nylon bumpers ensure level stacking and seat protection.

longevity

Industry Standard
"A" Size

A+



The H-Series is available in 13 1/2", 15 1/2", 17 1/2" heights and our 18 1/2" A+ size to accommodate a variety of students. The H-Series is offered with or without a bookrack.

Model	Size
H108	18 1/2"
H107	18"
H105	15 1/2"
H103	13 1/2"



H167, H168 (A+) – With all the same great features as the H-Series, this model has casters for classroom mobility.



HP90, HP98 (A+) – This solid plastic, gas lift task chair features casters for classroom mobility. Optional nylon glides available. Available as lab stool: HL90 and HL98 (A+).



H257, H258 (A+) – Heavy-duty frame design, large tablet arm and a smaller footprint makes this unit appealing when classroom space is at a premium.



H057, H058 (A+) – This unit combines our heaviest gauges of steel with the convenience of dual entry to easily satisfy the needs of both left and right-handed students. Optional nylon glides available.

A+

NEW!

S
O
L
I
D
P
L
A
S
T
I
C
S
E
R
I
E
S

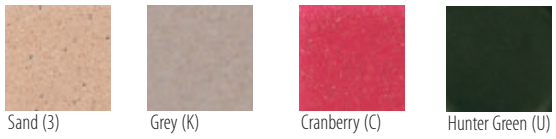


H757, H758 (A+) - Back by popular demand, the H700 "Max" Series offers the strongest frame in the industry. The Max Series takes our already solid H400 Series frame to the next level. Over-built... not over-priced. Pictured without standard book rack.

H457, H458 (A+) - This combination desk offering has been the industry benchmark for years. Our standard 1" x 14 gauge back post...superior in diameter and gauge to our competition...eliminates the need for a tie bar obstruction and guarantees long life in the classroom.

Solid Plastic Colors

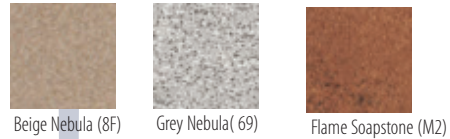
Seat and Back Colors



Metal Finishes



Laminate Selections



Solid Plastic Desktop Selections



NEW!

NEW!



A457 - When you want the look of a tie-bar in a solid plastic combo, our A457 is made for you.



J457 - All of the features of our H-Series combo with the convenience of an over-sized, tablet arm work surface.

Color representation may not be exact. Please contact Arco-Bell customer service for color swatches.

Student Desks



Open fronts, study desks, lift-lids, pedestal legs, junior executives...you name it, we have it. Configuration options, multiple work surface options and unique design characteristics like our built-in, leveling leg feature separates Artco-Bell student desks from all others. From kindergarten to college, millions of children are learning on Artco-Bell's student desks.

R900 Series, 9500 Series, 9400 Series & 9C00 Series

NEW!



R90D - Our newest line of student desks incorporates proven design strength of our C500 series with the added stability of twin adjustment bolts per leg. The generous 5" deep book box combined with a contoured front edge provides functionality and design for the student. Standard 18" x 24" work surface with a 20" x 26" option.

Student desks are essential to the foundation of education. Chairs alone cannot complete today's classroom environment. This is precisely why we offer a comprehensive and diverse line of student desk options. Artco-Bell student desks feature height adjustability from 22" to 33" for numerous user applications. An ADA accessible student desk, offering adjustability from 26" to 34", ensures that no child is left behind. Our A+ student desks allow today's larger students to work at a desk that fits their needs.

Artco-Bell student desks feature fully-welded frame designs and metal bookboxes. Wrap-around U-brace or full leg-to-work surface construction gives features not available with many other manufacturers. In keeping with our commitment to quality, Artco-Bell provides these features at no upcharge.

Our unique leveling leg design ensures our desks will sit level on virtually all flooring surfaces, allowing up to 1/8" leveling on all four legs with adjustability in 1" increments. Secure attachment of our full tube leg insert to the frame is achieved by using a large diameter screw that assembles through the frame and threads securely into the insert.

A wide variety of top sizes ranging from 18"x24" to 24"x48" are available in laminate, Perma Tuff™, plywood or solid plastic top options. Whether your application is kindergarten or college... Artco-Bell student desks are right for you.



9500 - This unit features a special angled bookbox and wrap-around U-brace for strength and user comfort. The steel bookbox is embossed for strength and features an integrated pencil tray. The unit is available with an optional full chrome frame and an optional 20" x 26" work surface. Laminate, Perma Tuff™, plywood or solid plastic options...configure the desk that fits your needs.



9400 - Our pedestal desk series offers a standard 20" x 26" work surface for greater flexibility in the classroom. Options include an open front, study desk or wire bookrack configuration.

9C00 - This student desk line features a 5" deep-drawn, oversized bookbox and embossed pencil tray. The unit is also available with an optional full chrome frame. Solid plastic work surface standard.



Student Desks



9100 – Our basic budget-conscious study table for many applications. Optional full chrome frame available.



9800 – All of the features of our 9100 with a wire bookrack. Optional full chrome frame available.



9906 – Our A+ study desk accommodates today's larger students. A standard 20" x 26" work surface, combined with greater height adjustability, makes this unit versatile for any classroom. Options include a wire bookrack and full chrome frame.



9780 – Our lift-lid desk features unique spring technology in a single mechanism lift hinge. This feature allows greater storage space for learning materials.



9680 – All of the features of our 9780 lift-lid with a pedestal leg design. A piano style hinge, rubber bumpers for safety, deep drawn embossed bookbox and a full width pencil tray complete this unit.



C500 – This student desk features our largest bookbox and a full width pencil tray combined in a unique integrated frame design. Also available in a matching two-student version.



9800 – Greater height adjustability of 30 1/2" makes this open-front ideal for taller students. Options include a wrap around U-brace (shown) and a full chrome frame. (Order 9A00 with no U-brace)

NEW!



99T6 – When the classroom requires a "Tote-Tray" desk, the 99T6 fits the bill. Generous sliding tote-tray stores securely under 20" x 26" work surface for ease of use in the classroom.

NEW!



7906 – Supported by twin tubular, adjustable height pedestal legs, the 7900 Series offers a standard 20" x 26" work surface and a generous poly book box. Two-student desks offer a 20" x 48" and 24" x 48" option. Single student desk 7906 is available with solid plastic work surface.



C200 – Stackable and light weight, this adjustable height desk is ideal for testing areas that require desk portability. Standard 18" x 24" laminate work surface.



1911 – The cantilevered leg design of this unit offers far less knee obstruction than a standard four-leg unit in an attractive two-student desk. The leg design features four independent, adjustable leveling glides.



2900 – Our ADA accessible study desk has an adjustability range of 26" to 34" to ensure that no child is left behind. A fully integrated U-brace guarantees strength and many years of reliable service.



C800 – This two-student version of our popular C500 has top options available in 18", 20" and 24" depths featuring 48" widths. When your classroom calls for a two-student desk, the C800 is your answer.



2121 / 2111 – Our Junior Executive desk is featured with two compartments for book storage, an integrated pencil tray and an angled bookbox for more leg room. The unit is available in both a right and left-hand version. A welded U-brace for structural integrity and a durable polypropylene modesty panel, that can be color coordinated to match your chairs, will make your classroom an "office" of learning.



1321 – Our study carrel features a spacious 24" x 36" work surface and a 10" deep storage shelf. The unit adjusts from 22" to 29" in height and features nylon leveling glides.

Student Desks Colors

Laminate Selections



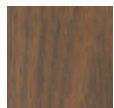
Nepal Teak (72)



Bannister Oak (8)

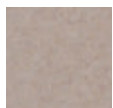


Woodland Rose (16)



Montana Walnut (1L)

Solid Plastic Desktop Selections



Grey (K)



Beige (4)



Sugar Maple (D)

NEW!

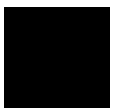


Wild Cherry (S)

Metal Finishes



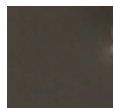
Chrome (5)



Black (7)



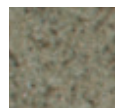
Putty (3)



Chardark (2)



Titanium (4)



Mystique Marsh (D8)



Mystique Night (F2)



Beige Nebula (8F)



Grey Nebula (69)

NEW!



Flame Soapstone (M2)

Color representation may not be exact. Please contact Arto-Bell customer service for color swatches.

Computer Furniture



A versatile line of computer furniture is essential when planning the optimum technology environment. Whether you are using desktop computers or laptops, our computer furniture is designed to accommodate many styles, options and budgets. Structural integrity combined with functionality is paramount to user satisfaction. All of our computer furniture is manufactured with heavy gauge steel frames designed to accommodate cable management. Multiple edge options include laminate and PermaTuff™ offering beauty and style to today's technology classrooms.

CY Series – Our best selling computer table is available in 3', 4', 5' and 6' lengths. The CY Series offers industrial grade design with the strength of dual-column pedestal legs, a standard integrated modesty / wire-management panel and factory installed cable grommets. Configure with an optional keyboard tray, your choice of two CPU holders (30" depth only), casters with work surface options to maximize your technology needs.



The 3" deep tray and cable passageway allows for easy access to power outlets and data ports.



The dual-column leg design forms a solid foundation for support of expensive computer equipment. The design allows the modesty panel to be positioned so the user has more knee space.

CY-SERIES COMPUTER TABLES

Model	Height	Top Size	Model	Height	Top Size
CY03	25" - 32"	30" x 36"	CY13	25" - 32"	24" x 36"
CY04	25" - 32"	30" x 48"	CY14	25" - 32"	24" x 48"
CY05	25" - 32"	30" x 60"	CY15	25" - 32"	24" x 60"
CY06	25" - 32"	30" x 72"	CY16	25" - 32"	24" x 72"
CY0C	25" - 32"	33" x 30"	CY0D	25" - 32"	27" x 27"

CY0C / CY0D are corner filler units

CX Series – When you want all of the features available on our CY Series in a value-conscious computer table...the CX Series is built for you. The solid single pedestal leg design can be configured with all of the options of our CY Series...value and functionality for any application.

CX-SERIES COMPUTER TABLES

Model	Height	Top Size	Model	Height	Top Size
CX03	22" - 29"	30" x 36"	CX13	22" - 29"	24" x 36"
CX04	22" - 29"	30" x 48"	CX14	22" - 29"	24" x 48"
CX05	22" - 29"	30" x 60"	CX15	22" - 29"	24" x 60"
CX06	22" - 29"	30" x 72"	CX16	22" - 29"	24" x 72"



CX03 – Table pictured with optional keyboard tray and CPU holder. (30" depths only)

CT Series – A classic cantilevered leg design, factory-installed integral frame stretcher bars, height adjustability and optional casters make this unit a classroom favorite. Available in the most popular top sizes and with optional accessories, the CT Series is the answer for multiple technology lab layouts.



CT-SERIES COMPUTER TABLES

Model	Height	Top Size	Shape
CT13	22" - 29"	24" x 36"	Rect.
CT14	22" - 29"	24" x 48"	Rect.
CT16	22" - 29"	24" x 60"	Rect.
CT17	22" - 29"	24" x 72"	Rect.
CT36	22" - 29"	30" x 36"	Rect.
CT48	22" - 29"	30" x 48"	Rect.
CT60	22" - 29"	30" x 60"	Rect.
CT72	22" - 29"	30" x 72"	Rect.
CT42	Riser Unit	21" x 42"	Trap.
CT76	22" - 29"	30" x 72"	Hex.
CT80	22" - 29"	40" x 80"	Trap.
CT95	22" - 29"	48" x 96"	Trap.



CD Series – Our value line of computer tables in a 27" fixed typing height. Twin post construction, a standard modesty panel and an optional 9" deep accessory shelf for storage makes this unit a strong addition to any classroom or lab. The CD Series is available in 24" and 30" deep work surface options.

CD-SERIES COMPUTER TABLES

Model	Height	Top Size
CD13	27" Fixed	24" x 36"
CD14	27" Fixed	24" x 48"
CD16	27" Fixed	24" x 60"
CD17	27" Fixed	24" x 72"
CD36	27" Fixed	30" x 36"
CD48	27" Fixed	30" x 48"
CD60	27" Fixed	30" x 60"
CD72	27" Fixed	30" x 72"
CD13	27" Fixed	24" x 36"
CD14	27" Fixed	24" x 48"
CD16	27" Fixed	24" x 60"
CD17	27" Fixed	24" x 72"

Shelf Options

Model	Use On	Dimensions
SH03	CD36/CD13	9" x 36"
SH04	CD48/CD14	9" x 48"
SH06	CD60/CD16	9" x 60"
SH07	CD72/CD17	9" x 72"



CF-SERIES COMPUTER TABLES

Model	Height	Top Size
CF03	25 3/4" - 34 3/4"	30" x 36"
CF04	25 3/4" - 34 3/4"	30" x 48"
CF05	25 3/4" - 34 3/4"	30" x 60"
CF06	25 3/4" - 34 3/4"	30" x 72"

CF Series – The flip-top design of this unit makes wire management a breeze. A fully welded and unitized frame creates a rock-solid platform for your technology needs. A standard open-ended cable channel provides optimum wire management for LAN/WAN networking applications. The work surface comes standard with a 3mm edge band for added protection. Options include a keyboard tray, your choice of two CPU holders and casters for added mobility.

CU-SERIES COMPUTER TABLES

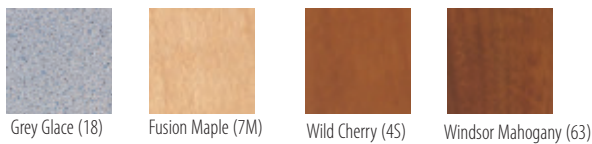
Model	Height	Top Size
CU03	25 3/4" - 34 3/4"	30" x 36"
CU04	25 3/4" - 34 3/4"	30" x 48"
CU05	25 3/4" - 34 3/4"	30" x 60"
CU06	25 3/4" - 34 3/4"	30" x 72"



CU Series – The same frame as our CF Series without the flip-top work surface. A factory installed cable grommet gives easy access to the integrated cable channel. Options include our Perma Tuff™ work surface, keyboard tray, casters and two CPU holders.

Computer Furniture Colors

Laminate Selections



NEW!



Metal Finishes



Color representation may not be exact. Please contact Artco-Bell customer service for color swatches.

Teacher's Desks



D500 shown with optional keyboard tray and casters.

Rugged and modular, flexible and affordable, our D-Series and T-Series teacher's desks offer the best of both worlds. The **D-Series** fully welded and unitized frame design serves as a rock-solid foundation for years of trouble-free use while the modularity of this product allows it to change as classroom technology develops. Height adjustability and mobility utilizing our caster option makes the Artco-Bell teacher's desk unique in today's market. Designed modularity allows common pedestals and center drawers to be interchanged with CPU holders and keyboard trays. The **T-Series** offers a fixed height, budget conscious desk without sacrificing quality. Single or double-pedestal options...D or T-Series...Artco-Bell teacher's desks...form following function.

D-Series

Smooth, radiused corners for classroom safety. The standard edge features vinyl T-mold edge banding. Optional PermaTuff™ edge available.

Our modular, independently locking pedestal gives you options...remove the pedestal and add a CPU holder...or leave the space open.

Model	Top Size
D500 Series	30" x 60"
D400 Series	30" x 48"



Our exclusive frame tie bar ensures that our pedestals will not rack and serves as a convenient foot rest.

Sturdy metal drawer pulls.

Adjustable height from 27"-36" for multiple-user applications.

D4L0 pictured.

T-Series

Smooth, radiused corners for classroom safety. The standard edge features vinyl T-mold. Optional PermaTuff™ edge available.

Modular, independently locking pedestal/s. Fixed 30" height with metal drawer pulls.



Fixed 30" height.

Model	Top Size
T500 Series	30" x 60"
T400 Series	30" x 48"

T4L0 pictured.

Multi-Purpose Tables

1200 Series Activity Tables

Artco-Bell activity and multi-purpose tables are available in a wide variety of shapes and sizes. Top shapes range from square or rectangular, to half-round and round. Kidney, horseshoe, trapezoid, clover and flower shapes round out this comprehensive offering. Leg styles come in four varieties and are height adjustable. All leg frames can be powder coated or chrome plated. Artco-Bell activity tables guarantee you will fit the right amount of people...at the right size table...every time.



Optional primary colored receivers offer color excitement for younger students.



1200 Series tables available in primary color laminates at no upcharge.



Optional primary colored T-mold.



Quick-set attachments provides for quick and easy installation.

1200 SERIES ACTIVITY TABLES

Model	Height	Top Size	Shape
1205	22" - 29"	36" x 36"	Square
1206	22" - 29"	24" x 36"	Rect.
1207	22" - 29"	30" x 30"	Square
1210	22" - 29"	24" x 48"	Rect.
1215	22" - 29"	42" x 42"	Square
1218	22" - 29"	36" x 48"	Rect.
1220	22" - 29"	30" x 48"	Rect.
1225	22" - 29"	48" x 48"	Square
1230	22" - 29"	30" x 60"	Rect.
1235	22" - 29"	24" x 60"	Rect.
1240	22" - 29"	36" x 60"	Rect.
1246	22" - 29"	24" x 72"	Rect.
1250	22" - 29"	30" x 72"	Rect.
1254	22" - 29"	30" x 90"	Rect.
1255	22" - 29"	30" x 96"	Rect.
1260	22" - 29"	36" x 72"	Rect.
1270	22" - 29"	42" x 60"	Rect.
1274	22" - 29"	36" x 72"	Half-moon
1275	22" - 29"	48" x 72"	Kidney
1276	22" - 29"	48" x 72"	Horseshoe
1277	22" - 29"	60" x 66"	Horseshoe
127H	22" - 29"	60" x 66"	Horseshoe
1280	22" - 29"	48"	Round
1281	22" - 29"	42"	Round
1282	22" - 29"	36"	Round
1285	22" - 29"	48"	1/2 Round
1286	22" - 29"	60"	Round
1290	22" - 29"	30" x 60"	Trap
1291	22" - 29"	24" x 48"	Trap
128F	22" - 29"	60"	Flower
128C	22" - 29"	48"	Clover



Factory-installed stretcher bars are standard on all tables 60" and larger in length.

Table shown with optional Perma Tuff™ edge

OPTIONAL JUVENILE HEIGHT RANGE 18" - 27" AVAILABLE.
WHEELCHAIR ACCESSIBLE HEIGHT RANGE 18"-34".
FIXED HEIGHT 29"

CATALYST™ SERIES MULTI-PURPOSE TABLES

CATALYST™ SERIES MULTI-PURPOSE TABLES

Model	Model	Height	Top Size	Shape
2204	3204	29"	30" x 36"	Rect.
2205	3205	29"	36" x 36"	Square
2210	3210	29"	24" x 48"	Rect.
2215	3215	29"	42" x 42"	Square
2220	3220	29"	30" x 48"	Rect.
2225	3225	29"	48" x 48"	Square
2230	3230	29"	30" x 60"	Rect.
2232	3232	29"	24" x 54"	Rect.
2235	3235	29"	24" x 60"	Rect.
2240	3240	29"	36" x 60"	Rect.
2246	3246	29"	18" x 60"	Rect.
2247	3247	29"	18" x 72"	Rect.
2248	3248	29"	24" x 72"	Rect.
2250	3250	29"	30" x 72"	Rect.
2260	3260	29"	36" x 72"	Rect.
2280	3280	29"	48"	Round
2286	3286	29"	60"	Round

2200 Series: 1.5" x 1.5" Leg Size, 1" x 2" Apron, 3/4" Core (Available with 1 1/8" Core - 2300 Series)

3200 Series: 2" x 2" Leg Size, 1" x 3" Apron, 3/4" Core (Available with 1 1/8" Core - 3300 Series)

The Catalyst™ Series offers multiple table solutions for science labs, the classroom or teacher work areas. Offered with two leg & apron sizes and two core thickness options, you can configure Catalyst for any application. Full perimeter 14 gauge steel apron fully supports the beefy work surface. Rugged 14 gauge legs guarantee years of dependable use. When you need a table that fits every application, Catalyst is the solution.

NEW!



- Two leg and apron offerings.
- Two work surface core thicknesses.
- 29" fixed height.
- Adjustable leg option.
- Leveling glides on each leg.
- Available with T-Mold or PermaTuff™ Edge option.

1500 Series Folding Tables



1500 SERIES FOLDING TABLES

Model	Height	Top Size	Shape
1530	22" - 29"	30" x 60"	Rect.
1535	22" - 29"	34" x 60"	Rect.
1546	22" - 29"	18" x 60"	Rect.
1547	22" - 29"	18" x 72"	Rect.
1548	22" - 29"	24" x 72"	Rect.
1550	22" - 29"	30" x 72"	Rect.
1555	22" - 29"	30" x 96"	Rect.
1560	22" - 29"	36" x 72"	Rect.
1565	22" - 29"	36" x 96"	Rect.

1900 Series Pedestal Leg Tables



1900 SERIES PEDESTAL LEG TABLES

Model	Height	Top Size	Shape
1910	22" - 29"	24" x 48"	Rect.
1920	22" - 29"	30" x 48"	Rect.
1930	22" - 29"	30" x 60"	Rect.
1935	22" - 29"	24" x 60"	Rect.
1940	22" - 29"	36" x 60"	Rect.
1946	22" - 29"	24" x 72"	Rect.
1950	22" - 29"	30" x 72"	Rect.
1960	22" - 29"	36" x 72"	Rect.
1965	22" - 29"	36" x 96"	Rect.
1970	22" - 29"	42" x 60"	Rect.
1986	22" - 29"	60"	Round
1990	22" - 29"	30" x 60"	Trap

Additional Seating

NEW!



Shown with optional ganging mechanism.

DSOA – High Density Stack Chair
Our new multi-purpose high density stack chair offers designer appeal and true ergonomic support. Stacks 40 high on mobile caddy for ease of movement. Options include nylon and steel glides, ganging mechanism, padded seats, chrome or painted frames and a broad color pallet.

NEW!



0162 – Mobile chair caddy with rugged steel frame and heavy duty casters. Designed specifically for the DSOA high density stack chair.



8108 – An oversized and dual-contour shell makes this chair a great option for multiple uses. The heavy-duty cross brace design ensures a stable foundation. Our Champion glide ensures years of trouble-free service.



8908 – This chair features the same shell as our 8108, with a standard 2" foam, full seat pad. A slight frame modification makes the unit ideal for uses outside the classroom.



CS17 – This multi-purpose, high density stack chair features an extra-wide polypropylene seat and back with a sturdy sled-base design. Optional nylon glides, a ganging mechanism and pads make this chair an excellent choice for cafeterias and assembly areas.



8P90 – This unit features the same shell as our 8108 and 8908 model in a castered and pneumatic height adjustment offering.

Also offered in a lab stool configuration: 8L90.

Stools & Support Items



0804, 0805 – With an easily-cleaned solid plastic seat, these two models offer height adjustability from 19 1/2" to 28 1/2" or 23 1/2" to 32". Both models are available with a full-chrome frame or a powder coat frame with chrome inserts. Optional fixed height: 0804 (18" & 24") 0805 (26", 28" & 30")



0801, 0802 – With a high-density polypropylene seat, these two models feature height adjustability from 19" to 27 1/2" or 23 1/2" to 32". Both models are available with a full-chrome frame or powder coat frame with chrome inserts. Optional fixed height: 0801 (18" & 24") 0802 (26", 28" & 30")

NEW!



0167 - Four wheel universal chair caddy for use on all Artco-Bell four-leg and sled based chairs.



CS17's on Caddy: The high density stacking characteristic of the CS17 allows the chair to be stacked up to 26 units high on our 0168 caddy, allowing for ease of movement with less storage space.



5915 – This speaker's stand offers a slim design with an 18"x24" work surface, 36" to 48" height adjustment and nylon leveling glides.

NEW!

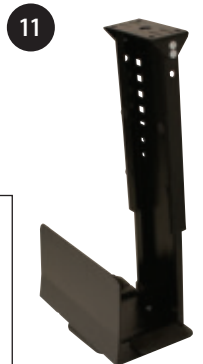
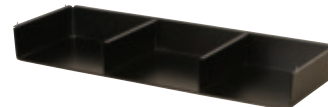
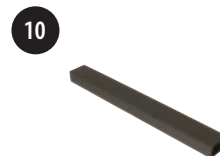
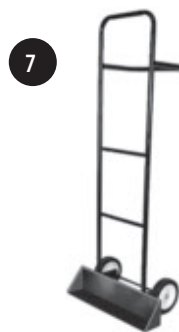
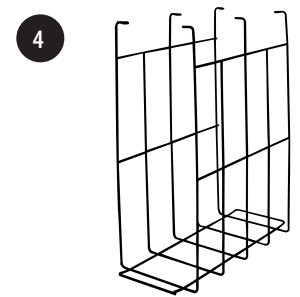


016U - Two wheel universal chair caddy for use on all Artco-Bell four-leg and sled based chairs.



2500 – This speaker's stand features an oversized, 18"x30" work surface with a storage compartment. A height adjustability range of 27" to 40" and casters for ease of movement round out this offering.

- 1 **WMP** – Add-on wire management panels are available in 21", 33", 45", and 57" lengths. All feature a 9" high panel with a 3" wide cable passageway and convenient cable throughways for connection to power and data ports.
- 2 **WMT** – Available in the same lengths as our WMP's, these 3" tall wire management trays can be used when low-profile cable storage is necessary.
- 3 **OOKB** – This sliding keyboard tray features full-extension, ball bearing suspension and a mouse pad that extends to the left or right.
- 4 **CPU1** – This steel-rod, single CPU holder; measures 18 3/4"H x 9 1/2"W x 17 1/2"D.
- 5 **PCS5** – This power and data port rotates down for convenient storage when not in use and can be installed on any computer table or teacher's desk.
- 6 **OOGT** – This 3" diameter cable grommet can be installed on any 1 1/8" work surface.
- 7 **0160** – This two-wheel dolly allows for easy transportation of 4-leg chairs whether transporting down stairs or from one building to another.
- 8 **0168** – This four-wheel dolly provides for easy transport and convenient storage of chairs. Model 0169 is available for A+ and 8100 series chairs.
- 9 **0021, 0022, 0023** – Optional steel book boxes in single (14 1/2" x 13 5/8"), double (30 1/8" x 13 1/2") and triple (42 1/4" x 13 1/2") sizes. The boxes are 4 1/2" tall.
- 10 **WMT7** – This polypropylene wire management unit can be placed under any work surface.
- 11 **CPU** – When space is a premium, this CPU holder is the answer. A 2" x 5" assembly bracket allows for both keyboard and CPU placement under our 3' computer tables.



Artco - Bell Color Selections

Prodigy™ Shell and Bookbox Colors



Solid Plastic Seat and Back Colors



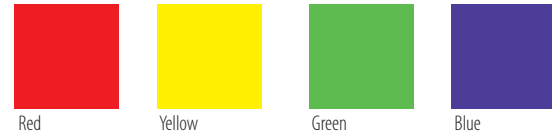
Solid Plastic Desktop Selections



Metal Finishes



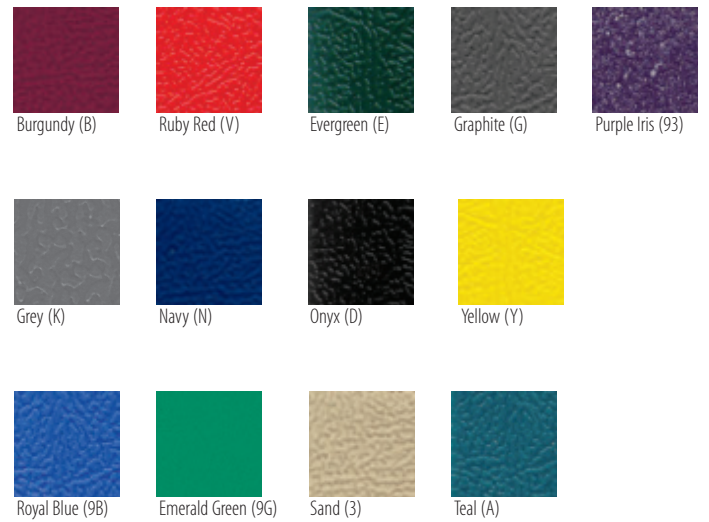
Optional Activity Table Leg Finishes



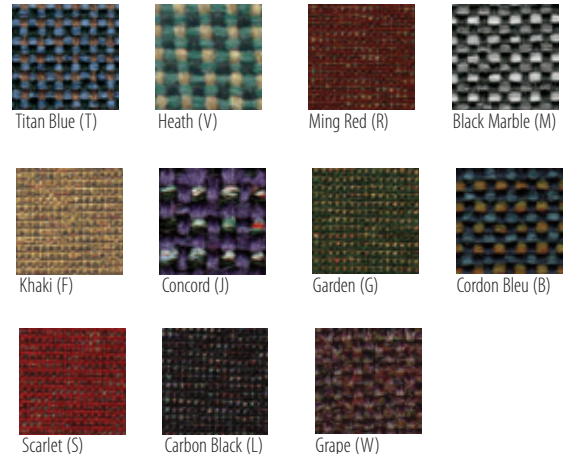
Laminate Selections



Uniflex Shell Colors

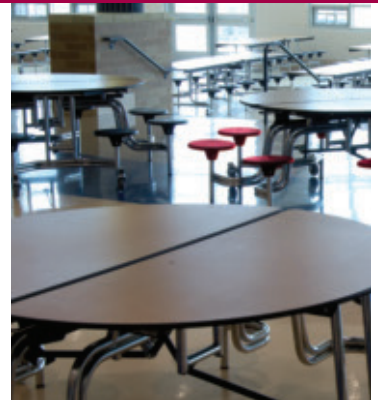


Fabric





TRANSFORMING ENVIRONMENTS • IMPROVING RESULTS



877.778.1811
sales@artcobell.com
www.artcobell.com

763.559.4664
info@lsi-casework.com
www.lsi-casework.com

800.621.4716
sales@midwestfolding.com
www.midwestfolding.com